



Technical Paper

Aliasing in Modal Parameter Estimation - A Historical Look and New Innovations

**Håvard Vold, ATA Engineering, Inc.
Mark Richardson, Vibrant Technology, Inc.
Kevin Napolitano, ATA Engineering, Inc.
Dan Hensley, ATA Engineering, Inc.**

San Diego, California 92130

Aliasing in Modal Parameter Estimation - A Historical Look and New Innovations

Håvard Vold, ATA Engineering, Inc.
Mark Richardson, Vibrant Technology, Inc.
Kevin Napolitano, ATA Engineering, Inc.
Dan Hensley, ATA Engineering, Inc.

Abstract

Experimentalists are familiar with the aliasing that happens in data acquisition when the sampling rate is less than twice the highest frequency of energy in the signal to be sampled. Much effort has been made over the years using a combination of analog and digital filters to make sure that the higher frequencies are filtered out to avoid or minimize the effect of this aliasing. Much less talked about is the aliasing that occurs in modal parameter estimation, or curvefitting, when the residual effects of out of band modes violate the assumptions of the finite dimensional parametric model that the experimentalist uses to curvefit the acquired digitized data. While the out of band energy has been filtered out of the now band limited data, the tails, sometimes called residual flexibility and inertial restraint¹ of the out of band modes are still present in the data. This article will look at some classes of modal parameter estimation algorithms and show by theory and example that the algorithms based on continuous time or Laplace domain formulations are superior to the discrete time domain or z domain models in that they give results which are not contaminated by the aliasing effect of these residuals. In addition, it will introduce the Alias Free Polyreference Method, which uses orthogonal polynomials in the infinite frequency domain, corresponding to a family of orthogonal Green's functions in the continuous time domain.

Introduction

Practitioners of the art and science of modal testing and experimental modal parameter estimation carefully choose algorithms and excitation methods for each testing situation with a balanced combination of prejudice, experience and folklore. Two popular methods in use today are narrow band frequency domain methods using polynomials for highly damped structures, and the discrete time complex exponential method with multiple references for high modal density and multi-point excitation. Mythologies exist on the merits of frequency domain versus time domain modal parameter estimation methods, and religious wars have been less fervent than some of the debates within the modal testing community. The classical method of modal testing has been the tuned sine dwell method, implemented in the middle of the last century with analog instrumentation².

¹ It is as if your house is surrounded by elephants and some tails and some trunks are protruding through the doors and windows while you try to enjoy a vegetarian dinner.

² Hence the nomenclature ancient sine dwellers of the California desert, which is used when its proponents are out of earshot.

While there is much to be said for the advantages of exercising modes in their normal form, one at a time, and at high force levels, and the possibility of using damping models other than the customary linear viscous damping model, we shall limit ourselves in this article to the uses of broadband testing and curvefitting methods due to the ease, efficiency and parsimony of their deployment.

Computational Modes

The motivation for this article is the pervasive existence of computational modes around the broadband modal parameter estimation methods. Such computational modes, or, poles, or roots are the byproduct of specifying a model order higher than the actual physical number of modes in the analysis band. It is almost always necessary to specify a model order which is "too high" in order to ensure proper identification of modes which correspond to the physical ones. The role of the extra computational modes, then is to fill in the cracks which are caused by residual effects, nonlinearities, noise and inconsistency due to mass loading, nonstationarities and a few other culprits. Since we are interested in the modal parameters of the physical modes, and not in the graphical nature of the curve fit itself, there is a fine line between choosing a model order which is too high and one which is too low. In any case, after the analysis run, the analyst is still faced with the triage of choosing those modes which clearly correspond to physical phenomena. Those which look improbable are discarded as computational modes³ and those which merely look dubious are slated for closer scrutiny.. The criteria for being a computational mode include negative or improbable damping, a frequency which is outside the analysis band, or lack of persistence as modal parameters are tracked from one model order to the next. This persistence is often depicted in a variety of stability diagrams. It is clear from the diagram that certain modes are constantly found in order of progressively larger orders. A mode that traces a straight line across the stability diagram is said to be stable, and is therefore assumed to represent a genuine physical mode. Parameter estimation methods with the same nominal performance may be judged quite differently in their performance when equipped with different triage criteria and stability graphics. The phenomenon that separates the continuous time methods from the discrete time methods is the nonlinear aliasing of the computational modes. The latter methods tend to put its computational modes inside the analysis band and also require more computational modes to fill in the cracks in the nonlinear data.

A Useful Dichotomy

We shall begin our investigation of computational modes by first answering the question "What is the difference between time domain and frequency domain in modal parameter estimation"? The answer that we shall proffer is "The real difference is between continuous time and discrete time". The frequency domain enthusiast should distinguish between the Laplace transform domain (continuous time) and z transform domain (discrete time). An unqualified use of the terms time domain and frequency domain is orthogonal to the pertinent characteristics of broadband modal parameter estimation. The phenomenon which most clearly divides the continuous time and the discrete time formulations is that of aliasing of computational modes as the curve fitter attempts to

³ Der Mohr hat seine Schuldigkeit getan, der Mohr kann gehen.

handle out of band residual effects. Lowpass filtering knocks the out of band resonance peaks out of the picture, whereas no amount of filtering will remove the residuals, tails and foothills of the out of band modes. In the discrete time methods, all modal frequencies are mapped onto the analysis band, whereas in the continuous time formulation, computational modes, or out of band phenomena are allowed to go where they should. In practical terms, computational modes in the discrete time methods are forced back into the analysis band, and there are also more computational modes because this aliasing is a non linear effect which confuses linear estimation assumptions, see Figure 1. Continuous time methods do not suffer from this weakness. The weakness of the continuous time formulations is that of numerical ill conditioning which rears its ugly head for larger sets of modes within an analysis band. This is cured by a change of basis of the transfer function expressions from power polynomials into some classes of orthogonal polynomials, but such methods have not achieved mainstream status yet. This article then will look at a variety of representative continuous time and discrete time modal parameter estimation algorithms, look at their mathematical derivations, and apply them to a common analytical data set with high modal density and a plethora of residual effects. We will then summarize the behavior of the different methods with respect to the placement and characteristics of computational modes, especially with respect to aliasing of said modes.

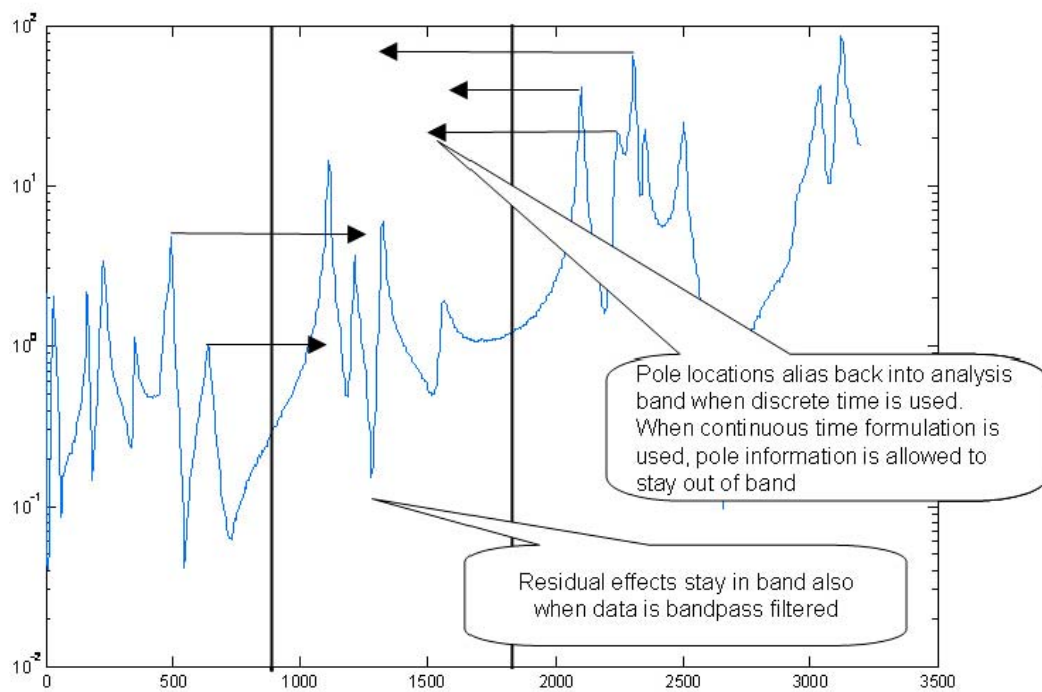


Figure 1 The mechanics of modal aliasing

The Models

We shall consider the simplest of multi-function situations, where we have a column of the frequency response function (FRF) matrix corresponding to a single point of excitation and multiple acceleration response locations. We will also assume that a

frequency band of interest has been selected, that the center frequency of this band has been translated to DC (zero radians/second), and that scaling has taken place such that the highest and lowest frequencies are $\pm\pi$ radians/sec.⁴ The corresponding time histories of these FRFs are now complex with time step one second. We shall select an analysis frequency band where we have strong out of band modes on either side. The data is from an aerospace structure, which was excited with burst random excitation, with enough attenuation between bursts so that the estimated frequency response functions would be reasonably clean and leakage free. Our selection of models is governed by trying to capture the behavior and characteristics of the most popular methods in use today. While most of these methods have a direct extension to multiple inputs, we shall only look at the single input, multiple output situation for the purposes of this paper.

Direct Estimation in the Laplace and z Domains

The Direct Parameter Frequency Domain Estimation methods were pioneered by people who wrote out the basic equations, and saw that when inputs and outputs were measured at a set of discrete frequencies, the system matrices occurred in a linear fashion. Given enough measurements, the curve fitting equations became a set of overdetermined linear equations. The model order is small, but the size of the matrices could become large. For a set of early references, see, e.g. [6, 7, 8 and 12]. The curve fitting model for both a z transform and a Laplace transform formulation is a rational vector function in the transform variable, i.e.

$$H(i\omega_k) = \begin{cases} A_Z(z_k)^{-1} B_Z(z_k), & \text{where } z_k = \exp(i\omega_k), \text{ z domain} \\ A_L(\omega_k)^{-1} B_L(\omega_k), & \text{Laplace domain} \end{cases} \quad (1.1)$$

where $\{\omega_k\}$ is the finite set of frequencies for which frequency response function data are available, and the matrix polynomials $A_{\cdot}(\cdot)$ and $B_{\cdot}(\cdot)$ are of the first order, meaning that the number of response coordinates must be at least as large as the number of effective modes in the analysis band. The highest order term of $A_{\cdot}(\cdot)$ is set to the identity matrix and we then can write the basic equation, e.g., in the z domain as

$$A_Z(z_k)H(i\omega_k) = B_Z(z_k), \quad (1.2)$$

which after expansion of polynomial terms becomes

$$(z_k I + A_{Z0})H(i\omega_k) = B_{Z1} + z_k B_{Z0}. \quad (1.3)$$

Finally, chasing the unknowns to the left side and using all the available data, equation (1.3) becomes

$$\begin{bmatrix} A_{Z0} & B_{Z1} & B_{Z0} \end{bmatrix} \begin{bmatrix} \vdots & H(i\omega_k) & \vdots \\ & 1 & \\ & & z_k \end{bmatrix} = - \begin{bmatrix} \vdots & z_k H(i\omega_k) & \vdots \end{bmatrix}. \quad (1.4)$$

This can then be solved by some least squares scheme for the unknowns, and we then find the z domain roots or poles as the eigenvalues of $(zI + A_{Z0})v = 0$. The Laplace domain poles are then calculated as $\ln(z)$ from which viscous damping and resonance frequency are extracted. Because of the periodicity of the complex

⁴ Typically done by a combination of zoom, low pass filtering and decimation.

exponential $\exp(i(\omega + 2\pi)) = \exp(i\omega)$, the computed frequencies must all be contained within the analysis band $[-\pi, \pi]$. The Laplace domain equations are done in exactly the same fashion, except that the Laplace domain roots are obtained directly from the eigenvalue problem and are in no way restricted to the analysis band. *This is a key difference between the discrete and continuous time methods.*

Ibrahim Time Domain

The Ibrahim Time Domain method, or ITD was first published by Sam Ibrahim who noted that the free decay of a vector of accelerations was governed by a constant transfer matrix. By estimating the transfer matrix, the modal parameters could be extracted. See e.g. [4 and 5]. The control engineers entered the fray in the middle eighties and defined an equivalent method derived from a state space formulation and called it the Eigenvalue Realization Method or, ERA, see, e.g. [16]. The authors added bells and whistles to allow for simultaneous incoherent multi-point excitation, such that close and repeated poles could be reliably determined. The free decay of a structure in continuous time can be expressed as

$$X(t) = V \exp(\Lambda t) V^{-1} X(0), \quad (1.5)$$

where V is the matrix of eigenvectors, Λ is the diagonal matrix of Laplace domain poles. If we assume that we have data at time steps of one second apart, we then have the following decay relation between the responses one second apart:

$$X(n) = V \exp(\Lambda) V^{-1} X(n-1), \quad (1.6)$$

so setting $T = V \exp(\Lambda) V^{-1}$,

$$T [X(1) \quad \dots \quad X(k) \quad \dots] = [X(2) \quad \dots \quad X(k+1) \quad \dots]. \quad (1.7)$$

We can find a least squares solution for T , and then get the system poles by solving for the eigenvalues of T . Since we must take the natural logarithm of the eigenvalues of the transfer matrix T to obtain the poles, ITD is also a z domain or discrete time method. Again, the computed frequencies are restrained to the analysis band $[-\pi, \pi]$. When the Ibrahim Time Domain method is used with free decay data obtained by inverse Fourier transforms of frequency response functions, it is sometimes of interest to weight the different frequency bands according to their coherence. It is much more important, though, to discard the first few time samples, since these are not free decays, but are contaminated by the numerator terms in the rational transfer function. To see this, we take the inverse Fourier transform of the z domain transfer function $H(z)$ in (1.1) which results in a convolution expression for the unit impulse response $h(n)$ in discrete time as

$$\sum_{k=0}^N A_{zk} h(n-k) = \sum_{k=0}^M B_{zk} \delta(n-k), \text{ where } \delta(\cdot) \text{ is the Dirac delta} \quad (1.8)$$

and N and M are the number of terms in the denominator and numerator matrix polynomials. While this defines the unit impulse response, the algorithms formulated in terms of free decay must have shed any excitation function before the measurements are usable in these algorithms. Let us rewrite (1.8) as

$$\sum_{k=0}^N A_{zk} h(n-k) = \begin{cases} B_{zn}, & 0 \leq n \leq M \\ 0, & n < 0 \text{ or } n > M \end{cases} \quad (1.9)$$

For this case where we have more functions than the effective number of modes, $N = M = 1$, and we see from (1.9) that we must skip at least the first two samples from the unit impulse response. This is also indicated in (1.7).

Complex Exponential

The complex exponential method was first used with real exponentials, i.e., only decay terms back in 1795 by Prony, see, e.g. [1]. Later, in the nineteen fifties, it found use as a vibration tool with complex exponentials by authors such as Spitznogle, see, e.g. [2]. In the early nineteen eighties, one of the authors used this method as the basis for a method that exploited multiple references, or, exciter locations, to enable the estimation of closely coupled modes and repeated roots, see, e.g. [10, 11 and 13]. This method was named Polyreference, and has become perhaps the dominant method in commercial use today. In this paper we shall restrict ourselves to a single reference, which suffices to handle the sample data set. The main difference between the complex exponential method and the Ibrahim Time Domain method, is that the latter is a low order method, while the former looks at one response coordinate at a time, and thus becomes a high order method. Let us now look at the individual unit impulse response functions of the measured channels, rewriting (1.9) in scalar form, letting the subscript z denote a generic channel, as

$$\sum_{k=0}^N a_k h_z(n-k) = \begin{cases} b_{zn}, & 0 \leq n \leq M \\ 0, & n < 0 \text{ or } n > M \end{cases} \quad (1.10)$$

Frequency weighting before applying the inverse Fourier transform is optional, and seldom called for. Since the resonances of a structure are assumed to be global entities, we are free to use a common denominator polynomial

$$a(z) = \sum_{k=0}^N z^{N-k} a_k. \quad (1.11)$$

The numerator polynomials are hence location dependent, and define the mode shape coefficients or residues at the corresponding measurement locations. Again, we let $N = M =$ number of effective modes in the analysis interval, and just as in the Ibrahim Time Domain method, we need to discard the first $M + 1$ samples of the unit impulse response to reach the free decay position. Now, normalizing the leading coefficient to unity, such that we have a monic denominator polynomial, we can use the discrete unit impulse response functions to write an overdetermined equation set for this polynomial as

$$aT_z \approx 0, \quad (1.12)$$

where $a = [1 \ a_1 \ \dots \ a_k \ \dots \ a_N]$, and

$$T_z = \begin{pmatrix} h_z(N+M+1) & \cdots & h_z(N+M+1+n) \\ \vdots & \cdots & \vdots \\ h_z(N+M+1-k) & \ddots & h_z(N+M+1-1) \\ \vdots & \ddots & \vdots \\ h_z(M+1) & \cdots & h_z(M+1+n) \end{pmatrix}. \quad (1.13)$$

We keep adding columns until the first time history in T_z goes end around. By inspection of the structure of (1.13), one can see that the rows of T_z are time shifted sections of the unit impulse response function $h_z(n)$. Thus, defining the row vector

$$\tilde{h}_z(p, q) = [h_z(p+1) \quad \cdots \quad h_z(p+n) \quad \cdots \quad h_z(p+1+q)], \quad (1.14)$$

the data matrix of (1.13) can also be written as

$$T_z = \begin{pmatrix} \tilde{h}_z(M+N, \dots) \\ \vdots \\ \tilde{h}_z(M+N-k, \dots) \\ \vdots \\ \tilde{h}_z(M, \dots) \end{pmatrix}. \quad (1.15)$$

Since the scalar denominator polynomial is the same for all response channels, we can rewrite (1.12) using all the responses as the overdetermined system of equations

$$a[T_1 \quad T_2 \quad \cdots \quad T_k \quad \cdots \quad T_N] \approx 0, \quad (1.16)$$

where N is the number of frequency response functions. A least squares solution through normal equations may be had by solving the positive semidefinite hermitian equations

$$a([T_1 \quad T_2 \quad \cdots \quad T_k \quad \cdots \quad T_N][T_1 \quad T_2 \quad \cdots \quad T_k \quad \cdots \quad T_N]^H) = 0, \quad (1.17)$$

which can be written as

$$aT = 0, \text{ where } T = \sum_{n=1}^N T_n T_n^H. \quad (1.18)$$

The polynomial a is normally found by normalizing the leading coefficient to one and solving (1.18). The poles of this system will then be the natural logarithm of the roots of (1.11), and hence the frequencies are kept within the analysis band. This leads to the possible aliasing of the computational modes. Looking at (1.10), we see that we can easily calculate the numerator polynomials for residue determinations once the denominator polynomial is known.

Least Squares Complex Frequency Domain

At the turn of the millennium, a series of papers on a new z domain modal parameter estimation method [25, 26, 27 and 28] came out of the milieu at the Free University in Brussels and the software house LMS International. The motivation was to construct a method which would be easier to use and lead more directly to a complete and valid modal model from a set of frequency response function measurements from one or more exciter locations. This method is also referred to as just LSCF⁵. For the purpose of this article, we will also restrict this method to the case of a single force input location and multiple of response locations. The basic equation for this scheme is to write the scalar form of (1.1) in the z domain for the channel z , as

$$H_z(i\omega_k) = \frac{b_z(z_k)}{a_z(z_k)}, \quad z_k = \exp(i\omega_k). \quad (1.19)$$

⁵ Since the authors clearly do not have access to the internals of the commercial implementations, this article is solely based upon the published body of work pertaining to the LSCF method.

Multiplying out the denominator polynomial, (1.19) becomes

$$a(z_k)H_z(i\omega_k) = b_z(z_k), \quad (1.20)$$

whereby we see that the unknown polynomial coefficients appear in a linear fashion and are hence amenable to least squares estimation. We next express (1.20) explicitly, with the error term ε_k , using the numerator and denominator polynomial coefficients, including all $K+1$ frequency lines, rearrange and obtain

$$\begin{bmatrix} b_z & a \end{bmatrix} \begin{bmatrix} X \\ Y_z \end{bmatrix} = \varepsilon_z, \quad (1.21)$$

with

$$X = \begin{bmatrix} z_0^M & z_1^M & \cdots & z_K^M \\ z_0^{M-1} & z_1^{M-1} & \cdots & z_K^{M-1} \\ \vdots & \vdots & \ddots & \vdots \\ z_0^0 & z_1^0 & \cdots & z_K^0 \end{bmatrix}, \quad (1.22)$$

and

$$Y_z = \begin{bmatrix} z_0^N H(i\omega_0) & z_1^N H(i\omega_1) & \cdots & z_K^N H(i\omega_K) \\ z_0^{N-1} H(i\omega_0) & z_1^{N-1} H(i\omega_1) & \cdots & z_K^{N-1} H(i\omega_K) \\ \vdots & \vdots & \ddots & \vdots \\ z_0^0 H(i\omega_0) & z_1^0 H(i\omega_1) & \cdots & z_K^0 H(i\omega_K) \end{bmatrix}. \quad (1.23)$$

A minimum norm solution for the denominator polynomial in (1.21) is found by minimizing the quadratic form,

$$\min_{a_0=1} \|\varepsilon_z\|^2 = \min_{a_0=1} \begin{bmatrix} b_z & a \end{bmatrix} \begin{bmatrix} XX^H & Y_z X^H \\ XY_z^H & YY_z^H \end{bmatrix} \begin{bmatrix} b_z \\ a \end{bmatrix}^H. \quad (1.24)$$

By setting $b_z = -aXY_z^H (XX^H)^{-1}$ the numerator term can be eliminated from (1.24), leading to the form

$$\min_{a_0=1} \|\varepsilon_z\|^2 = \min_{a_0=1} a(Y_z Y_z^H - Y_z (XX^H)^{-1} X Y_z^H) a^H. \quad (1.25)$$

Finally, a global solution is found by summing over all response channels z and minimizing the global error norm

$$\min_{a_0=1} \sum_z \|\varepsilon_z\|^2 = a T a^H, \quad \text{where } T = \sum_z (Y_z Y_z^H - Y_z (XX^H)^{-1} X Y_z^H). \quad (1.26)$$

A standard least squares solution is obtained by minimizing (1.26) subject to setting the leading coefficient a_0 to unity, whereas a total least squares solution is found by minimizing subject to keeping the global norm equal to unity.

$$\min_{\|a\|=1} \sum_z \|\varepsilon_z\|^2 = \min_{\|a\|=1} a T a^H. \quad (1.27)$$

The Relationship to the Complex Exponential Method

Next we will show that the published LSCF and the complex exponential methods are essentially one and the same. The mathematical details are given in section ‘‘The equivalence of LSCF and LSCE’’ below. We can see from this derivation that for a

single exciter location, LSCF and LSCE (the classical complex exponential method) are mathematically equivalent when no frequency domain weighting is used. It can similarly be shown that Polyreference implementations of the same two methods are mathematically equivalent. The numerical difference between the two formulations is in the application of the exceedingly benign discrete Fourier transform, which constitutes a rotation without any distortion of the least squares formulations of the curve fitting equations. We can also conclude from this that claiming that one method is superior to the other is a vacuous statement. The true distinction between curve fitting methods lies in the use of continuous time versus discrete time models. The LSCF method is hence the same as the LSCE method, and suffers from the aliasing of computational modes, just as all other discrete domain methods will. Furthermore, in the authors' experience, when one forgets to remove the leading elements of the unit impulse responses to reach the free decay portions, both the LSCE and thereby the classical Polyreference methods seem to sprout computational modes, due to the violation of the free decay assumption.

The Laplace Domain Rational Fraction Orthogonal Polynomial method [3, 9 and 24] was introduced around 1975, wherein the authors succeeded in solving smaller models with less than ten modes. The estimates are very clean, and specifically, the residual effects are relegated to the outside of the analysis frequency band. These methods were observed to be alias free, see [9], as a consequence of being formulated in continuous time, a benefit of exploiting the bounded spectrum of the acquired data. Vold and students at the University of Cincinnati determined in the middle nineteen eighties that the weakness of high order models in the Laplace domain lay in the transformation of the characteristic polynomial in an orthogonal polynomial basis back to the power polynomials before solving for the modes. This weakness was resolved by formulating the direct solution in orthogonal coordinates through a generalized companion matrix eigenvalue problem, as described in [17 and 18] and a number of papers and theses written in the circles of the University of Cincinnati and SDRC. With this one change of the solution procedure, the limitation of order size went from less than ten to as high as your patience would last, waiting for the computer to finish the calculations. One of the authors, Vold, worked in the middle nineteen nineties with researchers at the Free University of Brussels in Belgium to introduce the usage of orthogonal polynomials and the generalized companion matrix to Laplace domain system identification algorithms for controls and electrical engineering applications, see, e.g. [20, 21 and 22]. In these papers, the numerical and statistical performance of the orthogonal polynomials was also formally investigated, and shown to allow for the successful and predictable performance of high order models, something which had been deemed impossible before in the Laplace domain, or, equivalently, the continuous time domain. Figure 2 shows a graphic difference in the error generated with the use of ordinary power polynomials versus orthogonal polynomials in solving for the roots of a polynomial of order 18.

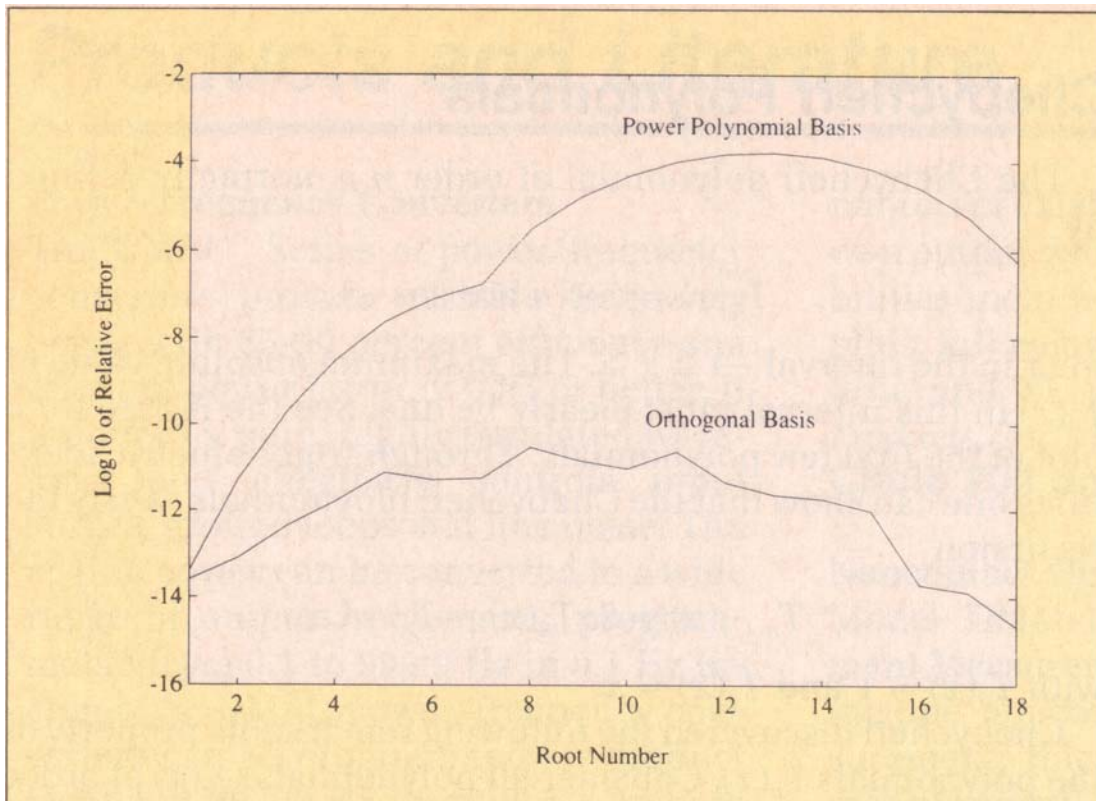


Figure 2 Numerical error in polynomial solve using power polynomials and orthogonal polynomials as basis functions

AFPoly, the Alias Free Polyreference Method

This method is based on the Laplace domain orthogonal polynomial rational fraction method, with the added usage of a generalized orthogonal polynomial companion matrix, which allows for the numerical stability over an entire frequency range containing hundreds, even thousands of modes. For an example of an orthogonal polynomial, see Figure 3.

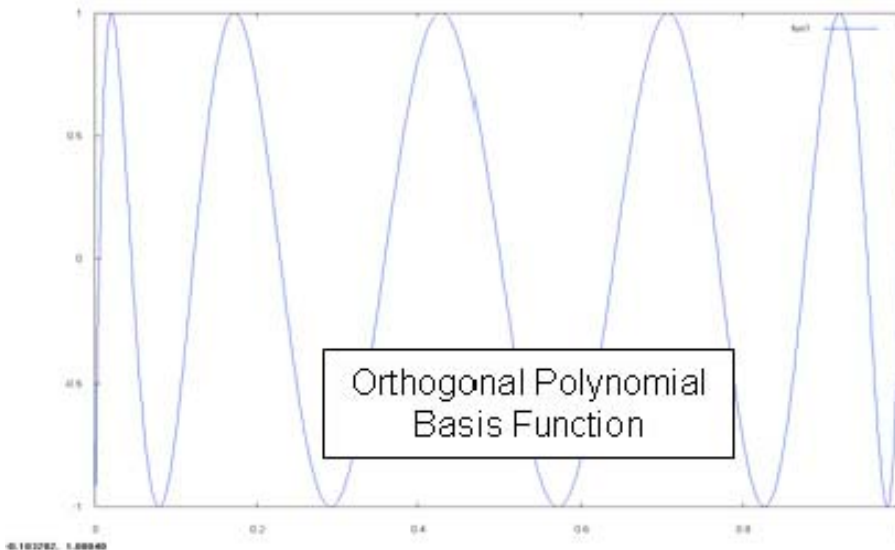


Figure 3 Orthogonal polynomial

The key observation is that we are working on test data which are bounded in the frequency domain and that hence, appealing to the sampling theorem, the formulation may be phrased in terms of continuous time, or, equivalently, the Laplace domain. Now, the orthogonality properties of the orthogonal polynomials in the Laplace domain induces an orthogonality property of the inverse infinite Fourier transform of these polynomials in the continuous time domain. Since the orthogonal polynomials are nonzero only over the bounded frequency range of the Lowpass filtered test data, the inverse infinite Fourier transform of these polynomials, the so called Green's functions are well defined wavelets with finite energy, see Figure 4.

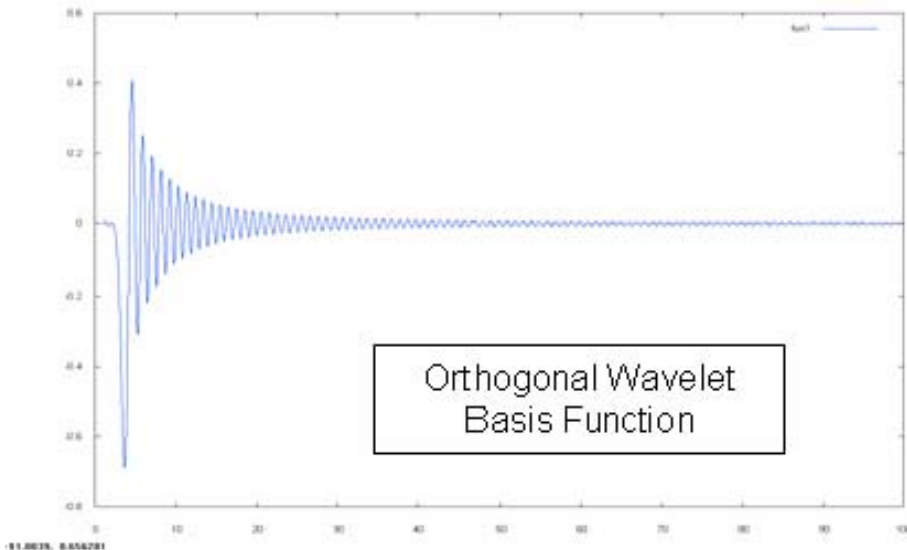


Figure 4 Green's function from orthogonal polynomial

Hence, in the continuous time domain, the usual differential equations of motion translate into convolution integrals with these finite energy Greens functions, and the usual numerical problems with higher order differentials vanish. Using these convolution integrals, we can also annihilate the differential operators on the force contributions in the

time domain, such that meaningful instrumental variables may be defined in order to process response data with unmeasured broadband excitation. The size of the equation systems is minimized by considering the adjoint system, exchanging the role of excitation and response, just as is done in the Polyreference method.

The principal advantage of this method is that the residual effects of modes outside the frequency band of analysis are kept outside this band, and hence, the nonlinear effects of aliasing are avoided. One may compare the improved clarity of an AFPoly stability diagram compared to the aliased complex exponential diagram in Figure 5.

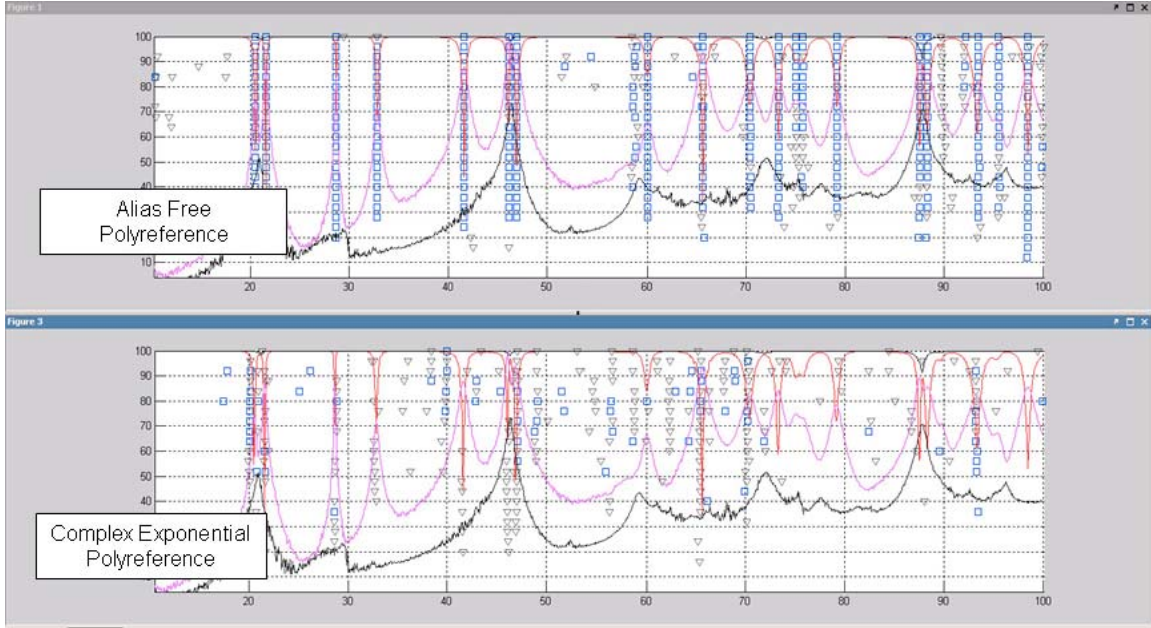


Figure 5 Alias free and aliased stability diagrams

A patent application which contains an exposition in full detail has been filed, see [30].

The equivalence of LSCF and LSCE

Proof of the equivalence of LSCF and LSCE

We first note that a unitary matrix U , satisfies $U^H U = I$ by definition. It is also true that the Euclidian norm of a vector, $\|v\|^2 = v^H v$, does not change when multiplied with a unitary matrix, since $\|Uv\|^2 = (Uv)^H Uv = v^H U^H Uv = v^H I v = \|v\|^2$. Next, we note that the matrix X defined in (1.22) satisfies $XX^H = (K+1)I$, since by inspection, the rows of X are the discrete Fourier transform coefficients of the transform of length $K+1$. We can then easily see that the matrix U is unitary, when

$$U = \frac{1}{\sqrt{K+1}} \begin{bmatrix} X \\ X^\perp \end{bmatrix} = \begin{bmatrix} U_1 \\ U_2 \end{bmatrix}, \quad X^\perp \text{ is a unitary complement of } X. \quad (1.28)$$

Also, when a row vector of length $K + 1$ is multiplied by U^H , it is inversely discrete Fourier transformed. Noting that the unitary matrix U of (1.28) does not change the Euclidian norm of a vector, we see from (1.21) that

$$\|\varepsilon_z\|^2 = \left\| \begin{bmatrix} b_z & a \end{bmatrix} \begin{bmatrix} X \\ Y_z \end{bmatrix} U^H \right\|^2, \quad (1.29)$$

such that minimizing equation (1.29) gives the same result as minimizing (1.24). Expanding the equation above and using (1.28) shows that

$$\begin{bmatrix} b_z & a \end{bmatrix} \begin{bmatrix} X \\ Y_z \end{bmatrix} U^H = \begin{bmatrix} b_z & a \end{bmatrix} \begin{bmatrix} I & 0 \\ Y_z U_1^H & Y_z U_2^H \end{bmatrix}, \quad (1.30)$$

and that by setting

$$b_z = -a Y_z U_1^H, \text{ when the denominator } a \text{ is known} \quad (1.31)$$

allows us to write the error norm as

$$\|\varepsilon_z\|^2 = \|a Y_z U_2^H\|. \quad (1.32)$$

To gain an understanding of (1.32), consider row p of Y_z which is

$$\left[z_0^{N-p} H_z(i\omega_0) \quad z_1^{N-p} H_z(i\omega_1) \quad \cdots \quad z_k^{N-p} H_z(i\omega_k) \quad \cdots \right]. \quad (1.33)$$

Inspection of this expression shows that this is the discrete Fourier transform of $h_z(n + (N - p))$ by the basic rule for forming the Fourier transformation of a time shifted function. Likewise, consider column q of U_2^H which is

$$\frac{1}{\sqrt{K+1}} \left[z_0^{-(M+1+q)} \quad z_1^{-(M+1+q)} \quad \cdots \quad z_k^{-(M+1+q)} \quad \cdots \right]^H, \quad (1.34)$$

and which produces time point $M + 1 + q$ of the inverse Fourier transform when postmultiplying a row frequency domain vector. For example, element p, q of the $Y_z U_2^H$ will be $h_z(M + 1 + q + (N - p)) = h_z(M + N + 1 + q - p)$. Hence, (1.32) can be expressed as

$$\|\varepsilon_z\|^2 = \left\| a \begin{bmatrix} h_z(M + N + 1) & \cdots & h_z(M + N + 1 + n) & \cdots \\ h_z(M + N) & \cdots & h_z(M + N + n) & \cdots \\ \vdots & \ddots & \vdots & \ddots \\ h_z(M + 1) & \cdots & h_z(M + 1 + n) & \cdots \end{bmatrix} \right\|^2, \quad (1.35)$$

which, using the notation of (1.14) and (1.15) can be written as

$$\|\varepsilon_z\|^2 = \left\| a \begin{bmatrix} \tilde{h}_z(M + N, \dots) \\ \tilde{h}_z(M + N - 1, \dots) \\ \vdots \\ \tilde{h}_z(M, \dots) \end{bmatrix} \right\|^2. \quad (1.36)$$

We therefore see from (1.36), (1.12), (1.13) and (1.15) that for a single exciter location, LSCF and LSCE (the classical complex exponential method) are mathematically equivalent when no frequency domain weighting is used.

Bibliography and References

1. Gaspard Clair Francois Marie Riche de Prony. Essai experimental et analytique: Sur les lois de la dilatabilite des fluids elastiques et sur celles de la force expansive de la vapeur del'eau et de la vapeur de l'alkool, a differentes temperatures. Journal de l'Ecole Polytechnique, Paris, 1:24-76,1795
2. F. R. Spitznogle and A. H. Quazi. Representation and analysis of time-limited signals using a complex exponential algorithm. Journal of the Acoustical Society of America, 47:1150-1155, 1970
3. Miramand, N., Billand, J.F., LeLeux, F. and Kernevez, J.P. Identification of Structural Modal Parameters by Dynamic Tests at a Single Point, France.
4. S. R. Ibrahim and E. C. Mikulcik. A method for the direct identification of vibration parameters from the free response. The Shock and Vibration Bulletin, 47(4):183-198, 1977.
5. S. R. Ibrahim. Random decrement technique for modal identification of structures. Journal of Spacecraft, 14(11):696-700, 1977.
6. Link, M.; Volland, A., Identification of Structural System Parameters from Dynamic Response Data, Zeitschrift für Flugwissenschaften, Volume 2, Number 3, 1978, pp. 165-174.
7. Coppolino, R.N., A Simultaneous Frequency Domain Technique for Estimation of Modal Parameters from Measured Data, SAE Paper No. 811046, 1981, 12 pp.
8. Leuridan, J., Direct System Parameter Identification of Mechanical Structures with Application to Modal Analysis, Master of Science Thesis, University of Cincinnati, 1981, 200 pp.
9. Formenti, D., Richardson, M.; Parameter Estimation from Frequency Response Measurements Using Rational Fraction Polynomials, Proceedings of the 1st International Modal Analysis Conference, Orlando, Florida, Nov. 8-10, 1982.
10. Vold, H.; Kundrat, J.; Rocklin, G.T.; Russel, R.; "A Multi-Input Modal Estimation Algorithm for Mini-Computers", SAE Technical Paper No. 820194, International Congress and Exposition, Detroit, Michigan, February, 1982.
11. Vold, H.; Rocklin, G.T.; "The Numerical Implementation of a Multi-Input Modal Estimation Method for Mini-Computers", International Modal Analysis Conference, Orlando, 1982.
12. Vold, H.; Leuridan, J.; "A Generalized Frequency Domain Method for Structural Parameter Estimation", 7th Seminar on Modal Analysis, Katholieke Universiteit Leuven, Belgium, September, 1982.
13. Vold, H.; Russel, R.; "Advanced Analysis Methods Improve Modal Test Results", Sound and Vibration, March, 1983.
14. Vold, H.; Crowley, J.R.; Rocklin, G.T.; "New Ways of Estimating Frequency Response Functions", Sound and Vibration, November, 1984.
15. Williams, R.; Crowley, J.R.; Vold, H.; The Multivariate Modal Indicator Function in Modal Analysis, 3rd International Modal Analysis Conference, January, 1985.
16. Juang, J.-N.; and Pappa, R. An eigensystem realization algorithm for modal parameter identification and reduction. Journal of Guidance, Control and Dynamics, 8(5):620-627, 1985

17. Vold, H.; "Numerically Robust Frequency Domain Modal Parameter Estimation", Sound and Vibration, January, 1990.
18. Vold, H.; "Statistics of the Characteristic Polynomial in Modal Analysis", Proceedings of the Fifteenth International Seminar on Modal Analysis, University of Leuven, September, 1990.
19. Vold, H., Leuridan, J., High Resolution Order Tracking at Extreme Slew Rates, using Kalman Tracking Filters, SAE Technical Paper No. 931288, Noise & Vibration Conference & Exposition, Traverse City, Michigan, May, 1993.
20. Y. Rolain, R. Pintelon, K. Q. Xu, and H. Vold, "On the use of orthogonal polynomials in high order frequency domain system identification and its application to modal parameter estimation," in Proc. 33rd IEEE Conf Decis. Contr., Orlando, FL, Dec. 14-16, 1994, pp. 3365-3373.
21. Xu, K. Q., Rolain, Y., Vold, H., "High Order Model Building in Frequency Domain Modal Analysis", 13'th International Modal Analysis Conference, Nashville, Tennessee, February, 1995.
22. Rolain, Y., Pintelon, R., Xu, Q., Vold, H., "Best Conditioned Parametric Identification of Transfer Function Models in the Frequency Domain", IEEE TRANSACTIONS ON AUTOMATIC CONTROL, Volume 40, Number 11 - November, 1995
23. Moeller, N, Brincker, R., Herlufsen, H. and Andersen, P.; Modal Testing of Mechanical Structures Subject to Operational Excitation Forces, Proceedings of the 19th IMAC, 2001.
24. Formenti, D., Richardson, M.; Parameter Estimation From Frequency Response Measurements Using Rational Fraction Polynomials (Twenty Years Of Progress), Proceedings of the 20th International Modal Analysis Conference, Orlando, Florida, Jan, 2002.
25. Vanlanduit, S., Verboven, P., Schoukens, J., and Guillaume, P.; An automatic frequency domain modal parameter estimation algorithm. Proc. of Int. Conf on Structural System Identification, Kassel, Germany, pages 637-646, 2001
26. Van der Auweraer, H., Guillaume, P., Verboven, P., and Vanlanduit, S. Application of a fast-stabilizing frequency domain parameter estimation method. ASME Journal of Dynamic Systems, Measurement, and Control, 123(4):651-658, 2001.
27. Guillaume, P., Verboven, P., Vanlanduit, S., Van der Auweraer, H., and Peeters, B. A Polyreference implementation of the least-squares complex frequency domain estimator. Proc. of IMAC 21, the Int. Modal Analysis Conf, Kissimmee, FL, USA, 2003
28. Peeters, B., Guillaume, P., Van der Auweraer, H., Cauberghe, B., Verboven, P., and Leuridan, J., Automotive and aerospace applications of the polymax modal parameter estimation method. Proc. of IMAC 22, the Int. Modal Analysis Conf, Dearborn, MI, USA, 2004
29. Brincker, Rune and Andersen, Palle.; Method for Vibration Analysis, United States Patent 6,779,404, August 24, 2004.
30. Vold, H., Methods and Apparatus for Modal Parameter Estimation, Patent Application, filed on June 26, 2006.